

CCL27 Antibody (C-term)
Affinity Purified Rabbit Polyclonal Antibody (Pab)
Catalog # AP17080B**Specification**

CCL27 Antibody (C-term) - Product Information

Application	WB,E
Primary Accession	O9Y4X3
Other Accession	NP_006655.1
Reactivity	Human
Host	Rabbit
Clonality	Polyclonal
Isotype	Rabbit IgG
Calculated MW	12618
Antigen Region	74-102

CCL27 Antibody (C-term) - Additional Information**Gene ID** 10850**Other Names**

C-C motif chemokine 27, CC chemokine ILC, Cutaneous T-cell-attracting chemokine, CTACK, ESkin, IL-11 R-alpha-locus chemokine, Skinkine, Small-inducible cytokine A27, CCL27, ILC, SCYA27

Target/Specificity

This CCL27 antibody is generated from rabbits immunized with a KLH conjugated synthetic peptide between 74-102 amino acids from the C-terminal region of human CCL27.

Dilution

WB~~1:1000

E~~Use at an assay dependent concentration.

Format

Purified polyclonal antibody supplied in PBS with 0.09% (W/V) sodium azide. This antibody is purified through a protein A column, followed by peptide affinity purification.

Storage

Maintain refrigerated at 2-8°C for up to 2 weeks. For long term storage store at -20°C in small aliquots to prevent freeze-thaw cycles.

Precautions

CCL27 Antibody (C-term) is for research use only and not for use in diagnostic or therapeutic procedures.

CCL27 Antibody (C-term) - Protein Information**Name** CCL27

Synonyms ILC, SCYA27

Function Chemotactic factor that attracts skin-associated memory T- lymphocytes. May play a role in mediating homing of lymphocytes to cutaneous sites. Binds to CCR10.

Cellular Location

Secreted {ECO:0000250|UniProtKB:Q9Z1X0}.

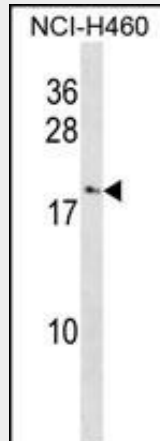
Tissue Location

Testis, thymus, placenta, ovary and skin.

CCL27 Antibody (C-term) - Protocols

Provided below are standard protocols that you may find useful for product applications.

- [Western Blot](#)
- [Blocking Peptides](#)
- [Dot Blot](#)
- [Immunohistochemistry](#)
- [Immunofluorescence](#)
- [Immunoprecipitation](#)
- [Flow Cytometry](#)
- [Cell Culture](#)

CCL27 Antibody (C-term) - Images

CCL27 Antibody (C-term) (Cat. #AP17080b) western blot analysis in NCI-H460 cell line lysates (35ug/lane). This demonstrates the CCL27 antibody detected the CCL27 protein (arrow).

CCL27 Antibody (C-term) - Background

This gene is one of several CC cytokine genes clustered on the p-arm of chromosome 9. Cytokines are a family of secreted proteins involved in immunoregulatory and inflammatory processes. The CC cytokines are proteins characterized by two adjacent cysteines. The protein encoded by this gene is chemotactic for skin-associated memory T lymphocytes. This cytokine may also play a role in mediating homing of lymphocytes to cutaneous sites. It specifically binds to chemokine receptor 10 (CCR10). Studies of a similar murine protein indicate that these protein-receptor

interactions have a pivotal role in T cell-mediated skin inflammation.

CCL27 Antibody (C-term) - References

Bailey, S.D., et al. Diabetes Care 33(10):2250-2253(2010)
Schuurhof, A., et al. Pediatr. Pulmonol. 45(6):608-613(2010)
Talmud, P.J., et al. Am. J. Hum. Genet. 85(5):628-642(2009)
Siezen, C.L., et al. Pediatr. Infect. Dis. J. 28(4):333-335(2009)
Narbutt, J., et al. Mediators Inflamm. 2009, 269541 (2009) :